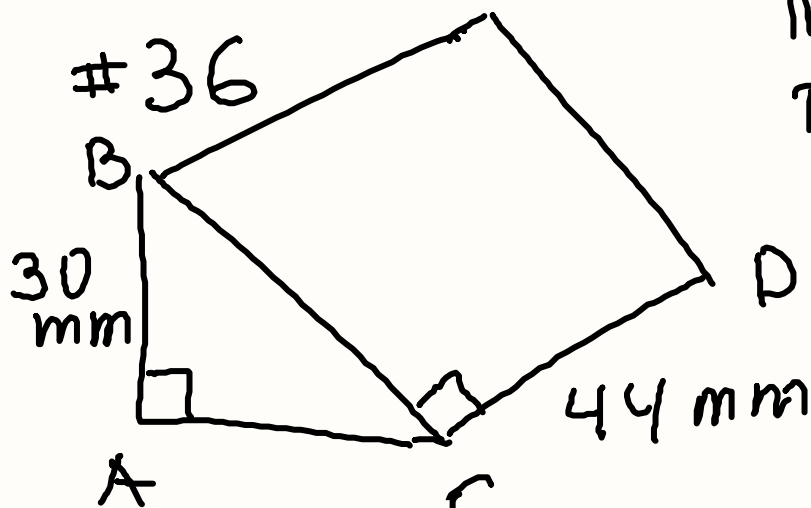


# GEOMETRY PART 5



THE AREA OF  
THE RECTANGULAR  
SHAPE IS 2200  
 $V = ?$

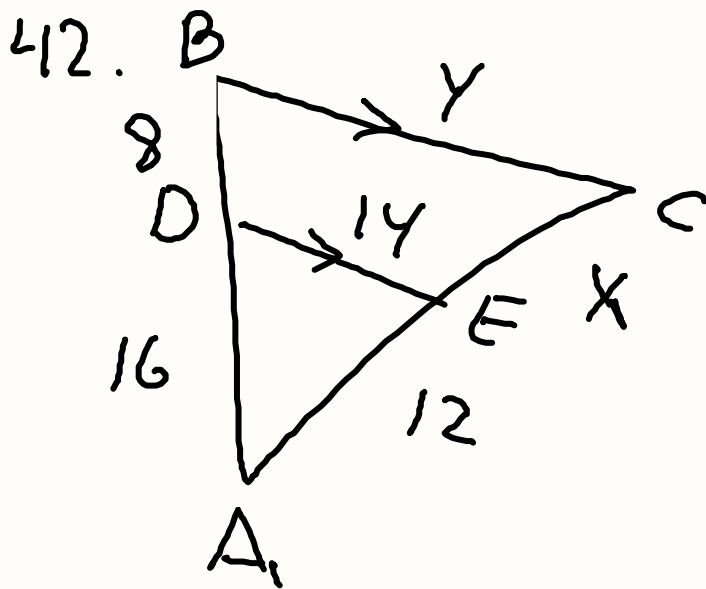
$$V = A_{\triangle ABC} \cdot CD$$

$$BC = \frac{2200}{44} = 50$$

$$AC = \sqrt{50^2 - 30^2} \approx 40$$

$$A_{ABC} = \frac{30 \cdot 40}{2} = 600 \text{ mm}^2$$

$$V = 600 \cdot 44 = 26400 \text{ mm}^3$$



$$\frac{8}{16} = \frac{x}{12}$$

$$96 = 16x$$

$$x = 6$$

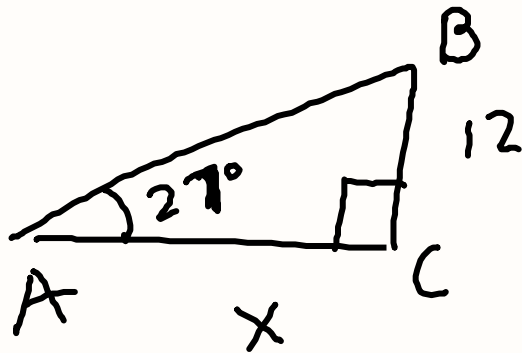
$$\frac{14}{y} = \frac{12}{18}$$

$$12y = 14 \cdot 18$$

$$y = \frac{14 \cdot 18}{12}$$

$$y = 21$$

43.

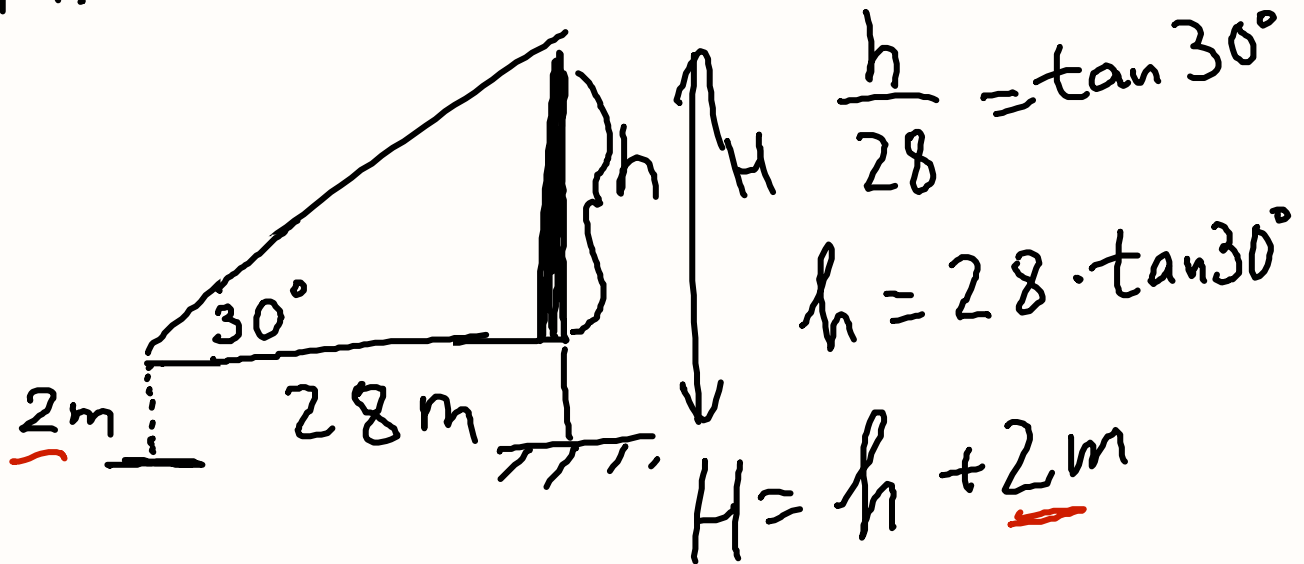


$$\tan 27 = \frac{12}{x}$$

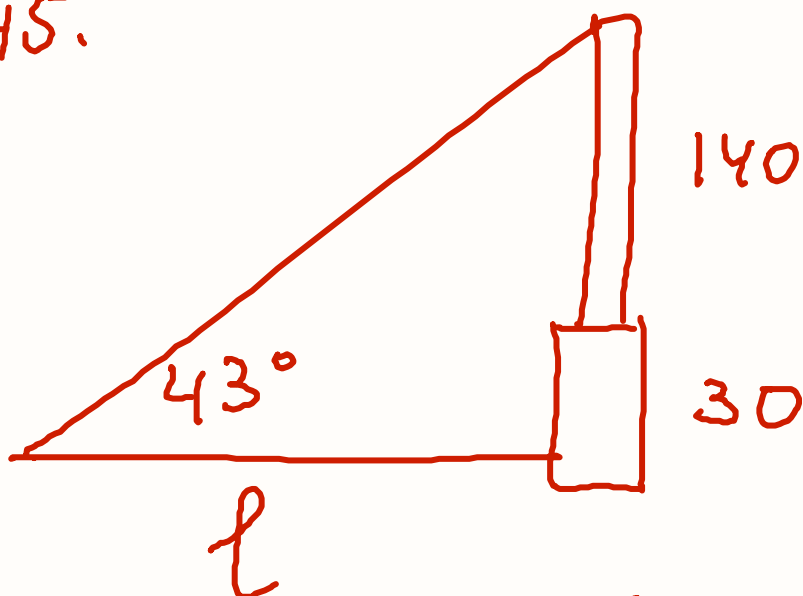
$$x \tan 27 = 12$$

$$x = \frac{12}{\tan 27^\circ}$$

44.



45.



$$h = 140 + 30 = 170 \text{ ft}$$

$$\tan 43^\circ = \frac{170}{l}$$

$$l \cdot \tan 43^\circ = 170$$

$$l = \frac{170}{\tan 43^\circ}$$